

MARINA HOLIDAY APARTMENTS - BRIDLINGTON



Self-contained holiday apartments, near the harbour, a few minutes from the South beach, Spa Centre, town centre and main amenities. Local shops & Tesco's supermarket close by.

- Apartment 1 - sleeps max to 5 (ground floor wheelchair access). Up to 2 dogs accepted outside of school holiday summer season & Spa Centre special event weekends
- Apartment 2 - sleeps max 5 persons
- Apartment 3 - sleeps max 6 persons
- Apartment 3a - sleeps max 2 persons

General Info for all apartments

Parking – Apartments 1, 2 & 3a come with 1 on street parking permit (24/7) per week / short stay for Control Zone B that the property occupies. Apartment 1 also has rear access space for 1 small economy sized car / motorbikes / scooters parked at owner's risk. Apartment 3 comes with 2 parking permits included. Additional permits can be bought at cost price for use by customers staying in Marina Holiday Apartments only

Smoking -This is a non-smoking establishment. A smoking area is available in the front forecourt. Apartment 1 has rear patio

Pets –

With the exception in Apartment 1, pets are not permitted at this property without the express permission of the proprietor. In Apt 1 up to 2 small / medium dogs are permitted (except during the school summer holiday season or main Spa event periods) Please note that a supplement applies, Guide / assistance dogs for disabled customers are permitted all year round with no charge.

Linen / towels -

Duvets and pillows are provided. However, bedding and towels are not included in the standard price as many customers prefer to bring their own to make the stay more economical. Linen packs can, however, be optionally hired at £10.00 per pack for a double bed with 1 bath and 1 hand towel each for 2 persons (or £8.00 for double bedding with towels for 1 person) and £6 per week/ stay for a single bed.

Launderette

There is a launderette very close to the apartments on West Street.

Families welcome

A high chair, travel cot, nappy bin and baby changing mat are available for use subject to availability. Also for Apartments 3/3a, stair gates are available if required. These items need to be pre-booked on the booking form and subject to availability

WiFi

Complimentary WiFi is available in all apartments

To book please contact: Janet Park Tel: 07980 866454 Email: Marinaholidays@hotmail.co.uk

MARINA HOLIDAY APARTMENTS - Apartment 1



- Ground floor self-contained apartment with wheelchair access (portable ramps provided)
- Spacious family bedroom - 1 double bed & 1 single bed
- Well-equipped kitchen/diner with oven, hob, fridge & microwave
- Shower room with step in shower cubicle
- Lounge with standard sized 2 seater double sofa-bed with mattress topper for extra comfort. (Flat screen T.V,& DVD player). Please note that a standard sofa when folded out is smaller in width than a normal 4'6" double bed. French doors.to private rear courtyard area
- Block-paved rear courtyard rear garden area with rear access & parking for a small economy car. Specific to this apartment only.
- Up to 2 small/medium sized dogs accepted (except during the school summer holidays unless at the proprietors discretion - supplement applies)
- Free complimentary Wi-Fi & 1 complimentary 24/7 on street parking permit for the duration of the stay. Extra permits can be purchased at cost price if required.
- This apartment has been awarded a 2017 Tripadvisor Certificate of Excellence based on customer reviews

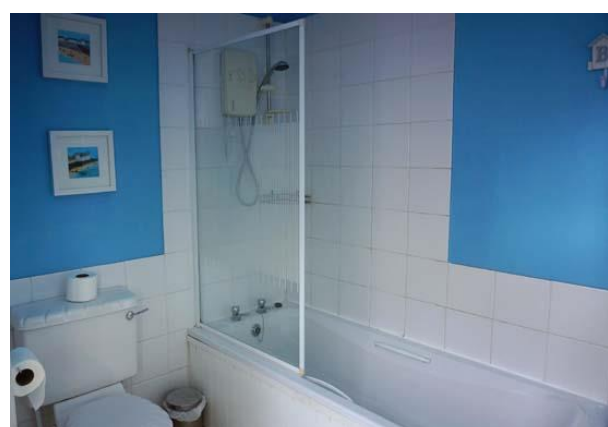
Access for disabled customers

This apartment has been designed with disabled customers in mind. It should be noted however that due to a fire door between the kitchen and the living room (fire safety requirements require this door to be kept closed when not in use) it would **not** be possible for an independent unaccompanied wheelchair user without any mobility to open and close this doors. The apartment has waist height light switches and sockets, handrails, & a portable wheelchair ramp available for use between the lounge and kitchen and out of the French doors onto the patio both of which have 1 step down. There is a standard step in shower cubicle with handrail. A portable shower seat and raised toilet seat are available on request.

For less mobile customers not using a wheelchair, please note that the portable ramp is still available to you if requested but otherwise, there is 1 step down (with hand rail) from the living room to the kitchen and through the French doors to the outside area.

Marina Holiday Apartments - Apartment 2 – 1st floor - sleeps up to 5

- 1st floor self-contained apartment with
- Open plan kitchen/lounge/diner with standard sized double sofa bed with mattress topper provided for extra comfort.(Flat screen T.V,& DVD player). Please note that a standard sofa when folded out is smaller than a normal double bed.
- Family Bedroom – with 1 double bed & 1 single bed leading to
- Bathroom with bath with overhead shower down a small corridor off the bedroom with 4 steps down to ot (N.B the bathroom which is private to Apartment 2 can also be accessed from the living room via the communal landing without going through the bedroom if required)
- 1 complimentary 24/7 on street parking permit for the duration of the stay. Extra permits can be purchased at cost price if required.
- Complimentary Wi-Fi
- This apartment has been awarded a 2017 TripAdvisor Certificate of Excellence based on customer reviews



Marina Holiday Apartments - Apartment 3 – Two-story self-contained apartment sleeps 6



- Two-story 4 bedroomed, 2 bathroom self-contained maisonette apartment. Sleeps 6
- 2 double bedrooms - 1 on the 2nd floor and 1 on the 3rd
- Please note that during upgrade work in 2017 the double bedroom on the 2nd floor may possibly become a twin bedroom during the course of the year (but not definite as yet)
- 2 single bedrooms (both on the 3rd floor)
- Thorough Lounge with archway to dining area. (flat screen TV &, DVD player)
- Well-equipped kitchen with oven, hob, fridge and microwave
- 2nd floor bathroom (toilet, wash hand basin and bath only with detachable shower hose)
- 3rd floor (attic level) shower room with toilet, wash basin & step in shower cubicle)
- Up to 2 complimentary parking permits for the duration of the stay. Extra permits can be purchased at cost price if required.
- Free complimentary Wi-Fi
- This apartment has been awarded a 2017 Tripadvisor Certificate of Excellence based on customer reviews

Marina Holiday Apartments - Apartment 3a – 2nd floor apartment sleeps 2 + 1 persons



- Double bedroom (nb during upgrade work in the winter of 2016/17 the double bedroom may possibly become a twin bedroom but not definite as yet.
- Well-equipped kitchen with fridge, oven / hob & microwave,
- Bathroom (bath only with removable shower hose attachment.
- Through lounge / diner. (flat screen T.V, DVD player)
- 1 complimentary parking permits for the duration of the stay & Free complimentary Wi-Fi. Extra permits can be purchased at cost price if required.

N.B: A put-u-up folding single bed is available for the living room when a third person is staying in this apartment (subject to availability and must be pre-booked)